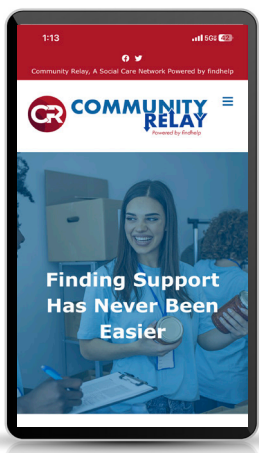


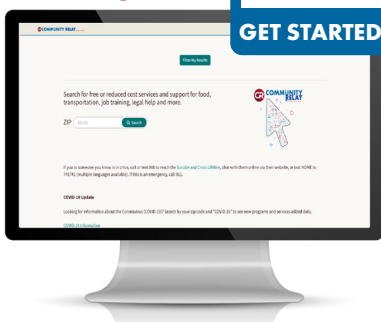
FIND **FREE- OR REDUCED-COST
PROGRAMS** IN YOUR LOCAL AREA

WELCOME TO

COMMUNITY RELAY

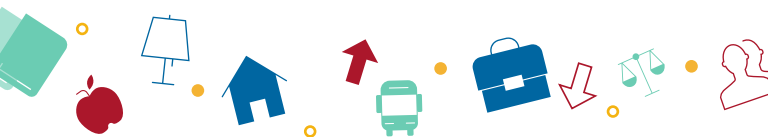


GET STARTED



Community Relay is a free, online directory to help you find services and support in your local community.

Starting with your zip code, you can search for local programs and services for things like food, housing, job placement, transportation, legal services and more.



Community Relay is searchable in over
100 DIFFERENT LANGUAGES

More than **155,000 ORGANIZATIONS**
participate in Community Relay nationwide



COMMUNITYRELAY.COM

Community Relay is a free resource presented by the
Nebraska Health Network.

GET STARTED



COMMUNITYRELAY.COM

Visit **CommunityRelay.com** and select the "Begin a Search" button.



SEARCH

You can begin by entering your zip code and narrowing your search using the 10 broad support categories listed below. Or, if you are not sure where to begin, you can complete the **Filter My Results** self-assessment, which enables Community Relay to make recommendations based on your responses to demographic, financial and other questions.

SUPPORT CATEGORIES



FOOD



GOODS



HOUSING



HEALTH



MONEY



TRANSIT



CARE



EDUCATION



WORK



LEGAL

FILTERS

Personal Filters.

Enable you to select your age, gender, education, urgency and more.

Income Eligibility.

Enables you to select the number of people living in your household and how much your household makes per month.

Program Filters.

Enable you to select a program's hours of operation, cost and how to contact them.

Relevance or Location.

Enables you to list selected programs by the relevance to your filters or by the proximity to your location.

SAVE & SHARE

If you choose to create a free user profile, you can save your favorite programs into personal or shared folders for future reference. You also have the option to share a resource with a caregiver or family member via email or text.



**COMMUNITY
RELAY**
Powered by findhelp